

IJBHS 10302

## Limbal epithelial stem cells of the cornea

Genevieve A. Secker and Julie T. Daniels<sup>§</sup>.

<sup>1</sup> Cells for Sight Transplantation and Research Programme, Department of Ocular Biology and Therapeutics, UCL Institute of Ophthalmology, 11-43 Bath Street, London, EC1V 9EL, UK

<sup>§</sup> To whom correspondence should be addressed. E-mail: [ku.ca.lcu@sleinad.j](mailto:ku.ca.lcu@sleinad.j)

**ABSTRACT:** The cornea on the front surface of the eye is our window to the world, hence maintenance of corneal tissue transparency is essential for vision. The integrity and functionality of the outermost corneal layer, the epithelium, plays a key role in refraction of light on to the retina at the back of the eye. Like other epithelia, the epithelium of the cornea is maintained by stem cells. This review will discuss what is currently known about the properties of these stem cells, the clinical consequences of stem cell failure and the potential for stem cell therapy in regeneration of the ocular surface.

### Function and structure of the cornea

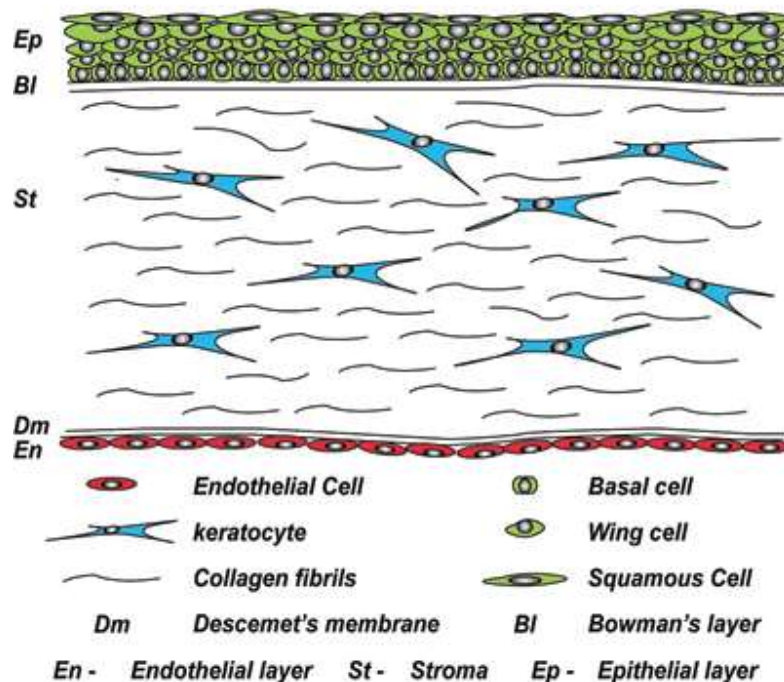
The cornea is responsible for protecting the eye against insults such as injury and infection. It also provides the majority (two thirds) of the total refractive power of the eye and is therefore the major refracting lens (Meek *et al.*, 2003).

The cornea is comprised of five layers (see Figure 1), the outermost non-keratinised stratified epithelium, Bowman's layer, a highly ordered keratocyte-populated collagenous stroma, Descemet's membrane and the inner endothelium (a cellular monolayer).

### Corneal development

Development of the anterior chamber of the eye (comprised of the cornea, lens, ciliary body, iris, trabecular meshwork and aqueous humour) requires the interaction of cells from the surface epithelium and neuroepithelium with mesenchymal cells predominantly of neural crest origin.

Anterior eye development first begins with the formation of the lens placode. This forms after the optic vesicles come in contact with the surface ectoderm. A thickening forms, that enlarges and forms a lens pit. Between days E8.5 and 9.5 in mouse this lens pit becomes the lens vesicle and remains connected to the surface ectoderm via a lens stalk (Kaufman, 1992; Pei and Rhodin, 1970). Eventually this lens vesicle detaches from the surface ectoderm and invaginates into the optic cup. Shortly after this detachment, periocular mesenchymal cells derived from somitomeic mesoderm and forebrain neural crest migrate into the space between the anterior lens vesicle epithelium and the surface ectoderm, eventually forming keratocytes and corneal endothelium (Trainor and Tam, 1995).



**Figure 1: The human cornea in cross-section.**

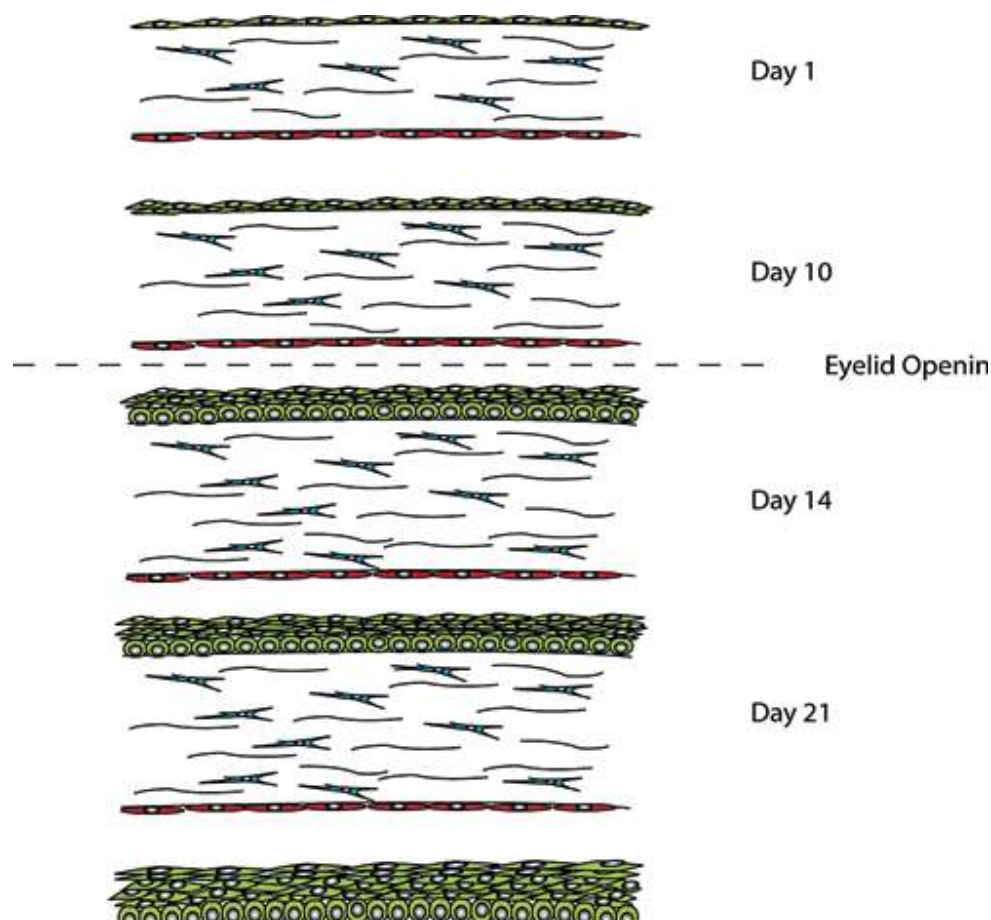
At the outer surface of the cornea, there is an epithelial layer, which sits on a basement membrane above Bowman's layer. The middle stromal layer, which is sparsely populated with keratocytes is surrounded by dense connective tissue. The final layer consists of a single sheet of endothelial cells, which sits on Descemet's membrane.

In mice, four to seven layers of mesenchymal cells are seen at E12. These cells have long cytoplasmic extensions with a star shaped phenotype (Haustein, 1983). Cell numbers continue to increase and condense to form several layers of separated flattened cells. At E14.5 to E15.5 the cells adjacent to the lens structure form the endothelium (Reneker *et al.*, 2000). The surface ectoderm cells overlaying the mesenchymal cells become the corneal epithelium. The remaining mesenchymal cells between these two layers differentiate into corneal stromal fibroblasts (Cintrón *et al.*, 1983). This differs with humans, where there is a second wave of mesenchymal cell migration into the space between the newly formed endothelial layer and the surface ectoderm. These cells differentiate into corneal fibroblasts. In mouse the proliferative potential of corneal fibroblasts diminishes during development from birth to eyelid opening, however they arrest in the G0 phase of the cell cycle as opposed to becoming terminally differentiated (Zieske *et al.*, 2001). As the corneal endothelium differentiates, the lens detaches from the immature corneal structure. This allows the formation of a fluid filled area in to which the iris and ciliary body grow.

Studies resulting in abnormal corneal development due to the over expression of growth factors such as TGF $\alpha$ , FGF3 and EGF in the lens, highlight the importance of the lens in cornea development (Coulombre and Coulombre, 1964; Reneker *et al.*, 1995; Reneker *et al.*, 2000; Robinson *et al.*, 1998). The ectoderm overlaying the lens becomes the corneal epithelium. In its primitive state the epithelium is 1–2 cell layers thick and later stratifies to three to four cell layers following lens detachment. The eyelids then form and fuse with the primitive epithelium being

reduced to 1–2 cells layers thick until eyelid opening which occurs at 24 weeks gestation in humans and P12 to P14 in mice.

For up to seven days of age the corneal and limbal epithelia in rats is 1–2 cells layers (Chung *et al.*, 1992). Prior to eyelid opening at 10 days the epithelial thickness increases to two to three layers. Further increases to four-five cell layers occur in the central cornea following eyelid opening at two weeks of age (Chung *et al.*, 1992; Watanabe *et al.*, 1993). The layers continue to increase until four weeks of age when the epithelium reaches adult levels of six to seven cell layers (Song *et al.*, 2003). The basal epithelial cell shape also changes with development. Initially the cells are flat and ovoid in shape until eyelid opening after which they become more cuboidal. By three weeks the basal cells are more columnar in the central cornea but not the limbal region (Chung *et al.*, 1992).



**Figure 2: Development of the rodent cornea.**

Between days P1 and P7 the epithelial layer is 1-2 cell layers thick until just prior to eyelid opening at day P10, when this increases to 2-3 cell layers. Following eyelid opening at day P14 the number cell layers increases to 4-5 with 5-6 cells layers being present at 3 weeks of age. At P28 the corneal epithelium is representative of the adult epithelium, with a single layer of columnar basal cells, which become flattened as they move to the surface.

### **The stroma and endothelium**

The stroma is a mesenchymal tissue derived from the neural crest. The dense tissue of the stroma accounts for 90% of the total corneal thickness. The parallel arrangement of lamellae formed from heterodimeric complexes of type I and type V collagen fibres maintain transparency (Fini and Stramer, 2005). These collagen fibres are held in a uniform spacing pattern by proteoglycans. Keratocytes (fibroblasts) are located between the lamellae (Hay *et al.*, 1979). These sparsely located keratocytes link to one another via dendritic processes (Muller *et al.*, 1995) and produce crystalline proteins to maintain corneal transparency (Jester *et al.*, 1999). Recent reports have described a keratocyte stem cell population in the anterior stroma (Du *et al.*, 2005; Funderburgh *et al.*, 2005).

Descemet's membrane rests on the innermost surface of the cornea. It acts as a basement membrane for the inner endothelial cell monolayer. These cells transport nutrients from the aqueous humour to the stroma and concurrently pump out excess water preventing corneal oedema (swelling) by maintaining optimal hydration.

### **The corneal epithelium**

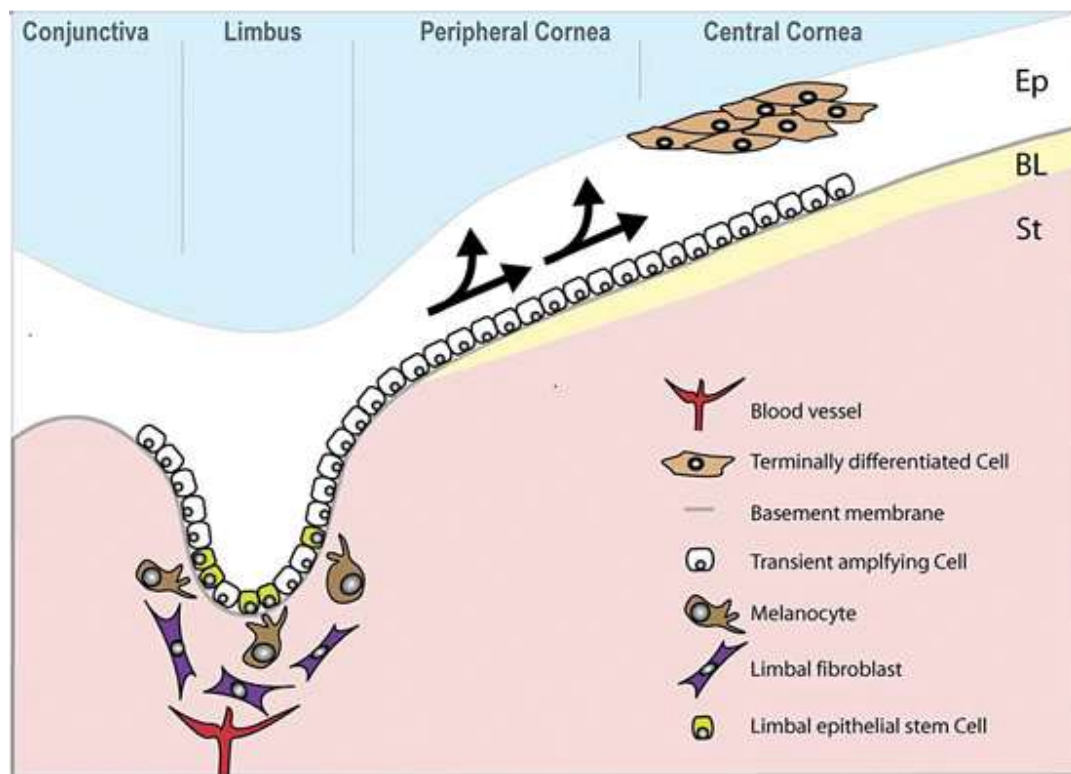
The corneal epithelium is a dynamic physical barrier preventing the entry of deleterious agents into the intraocular space. It consists of superficial squamous cells, central suprabasal cells and a single layer of inner columnar basal cells. The differentiated squamous cells have surface microvilli and occupy the outer 1–3 cell layers of the epithelium. The function of the microvilli is to increase cell surface area allowing close association with the tear film. Highly resistant tight junctions formed between neighbouring cells provide a protective barrier (Klyce, 1972). The underlying suprabasal cells have wing-like extensions, rarely undergo division and migrate superficially to differentiate into squamous cells.

The inner basal cells consist of a single layer of columnar cells with several important functions including the generation of new suprabasal cells. Additionally, they secrete matrix factors important for basement membrane and stromal function. The basal cells also regulate organisation of hemidesmosomes and focal complexes to maintain attachment to the underlying basement membrane. These functions are suggested to be important in mediating cell migration in response to epithelial injury (Pajoohesh-Ganji and Stepp, 2005).

### **Homeostasis in the corneal epithelium**

Corneal integrity and therefore function is dependent upon the self-renewing properties of the corneal epithelium. The prevailing hypothesis is that this renewal relies on a small population of putative stem cells located in the basal region of the limbus. These putative stem cells are primitive and can divide symmetrically to self renew and asymmetrically to produce daughter transit amplifying cells (TAC) that migrate centripetally to populate the basal layer of the corneal epithelium (see Figure 3; Kinoshita *et al.*, 1981; Tseng, 1989). The TAC divide and migrate superficially, progressively becoming more differentiated, eventually becoming post-mitotic terminally differentiated (TD) cells. Using suppressive subtractive hybridisation, Sun *et al.*, 2006 identified a novel gene (EEDA) with localisation to corneal basal and suprabasal cells, suggesting it is involved in early stage stratification of epithelial differentiation (Sun *et al.*, 2006).

Once fully differentiated TD squamous cells are shed from the ocular surface during normal wear and tear and this in turn stimulates the cycle of cell division, migration and differentiation (Beebe and Masters, 1996). Thoft and Friend developed the 'The X, Y, Z hypothesis of corneal epithelial maintenance'. This hypothesis proposed that the addition of the proliferation of basal cells (X) and the centripetal migration of cells (Y) was equal to epithelial cell loss from the corneal surface. However, they were unable to rule out the involvement of the neighbouring bulbar conjunctiva (Thoft and Friend, 1983). Later, mathematical analysis indicated that the corneal epithelial cell mass could be renewed by cells from the limbal epithelium alone (Sharma and Coles, 1989). Furthermore, a fine balance between cell proliferation, differentiation, migration and apoptosis is necessary. A variety of cytokines have been shown to play important roles in the maintenance and wound healing of the cornea. These factors are supplied in part by the adjacent tear film and the aqueous humour (Welge-Lussen *et al.*, 2001). Other growth factors are produced by keratocytes in the supporting stroma (West-Mays and Dwivedi, 2006) and by the corneal epithelial cells themselves (Rolando and Zierhut, 2001).



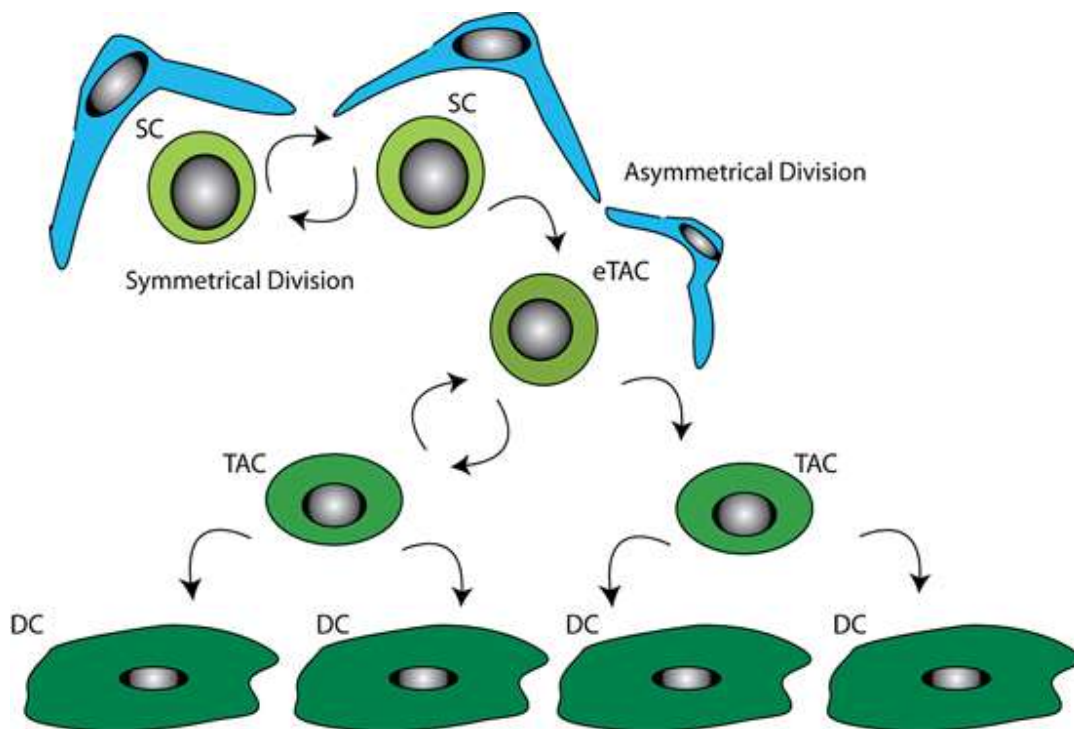
**Figure 3: The human limbus.**

Limbal epithelial stem cells reside in the basal layer of the epithelium (Ep), which undulates at the limbus. Daughter transient amplifying cells (TACs) divide and migrate towards the central cornea (arrowed) to replenish the epithelium, which rests on Bowman's layer (BL). The stroma (St) of the limbal epithelial stem cell niche is populated with fibroblasts and melanocytes and also has a blood supply.

### Limbal epithelial stem cells

Throughout life, our self-renewing tissues rely upon populations of stem cells / progenitors to replenish themselves throughout life following normal wear and tear and injury. The corneal epithelium on the front surface of the eye is no exception as dead squamous cells are constantly sloughed from the corneal epithelium during blinking. At the corneo-scleral junction in an area known as the limbus, there is a population of limbal epithelial stem cells (LESCs). LESCs share common features with other adult somatic stem cells including small size (Romano *et al.*, 2003) and high nuclear to cytoplasmic ratio (Barrandon and Green, 1987). They also lack expression of differentiation markers such as cytokeratins 3 and 12 (Kurpakus *et al.*, 1990; Schermer *et al.*, 1986).

LESCs are slow cycling during homeostasis and therefore retain DNA labels for long time periods, however in the event of injury they can become highly proliferative (Cotsarelis *et al.*, 1989; Lavker and Sun, 2003; Lehrer *et al.*, 1998). To replenish the stem cell pool, stem cells have the ability to divide asymmetrically (see Figure 4).



**Figure 4: Illustration of stem cell control by the niche.**

It is thought LESCs undergo asymmetric cell division producing a stem cell, which remains in the stem cell niche to repopulate the stem cell pool, and a daughter early transient amplifying cell (eTAC). This more differentiated eTAC is removed from the stem cell niche and is able to divide further producing transient amplifying cells (TAC), eventually giving rise to terminally differentiated cells (DC). The double arrows represent the self-renewing capability of the stem cells. The supporting niche cells (blue) surround the stem cells (light green).



Expression of C/EBP $\Delta$  in a subset of LESC both *in vivo* and *in vitro* has recently been suggested to be involved in the regulation of self-renewal and LESC cell cycle length (Barbaro *et al.*, 2007).

### **Evidence for stem cells in the corneal limbus**

The first experimental indication of the presence of stem cells in the limbus was the observation of pigment (melanin) movement from the limbus to towards an epithelial defect following wounding of rabbit corneas (Mann, 1944).

Davanger and Evenson later observed a similar centripetal migration of pigment from limbus to central cornea in humans. Hence they proposed that the limbal Palisades of Vogt (PV) were the source of LESC (Davanger and Evenson, 1971; Huang and Tseng, 1991). Following lamellar keratoplasty, this centripetal migration was also observed in the rabbit as host epithelium was gradually replaced with donor epithelium (Kinoshita *et al.*, 1981). Furthermore, the complete removal of the limbus results in impaired corneal function, neovascularisation and conjunctival ingrowth (Huang and Tseng, 1991).

Stem cells may be identified by the retention of DNA labels as they are slow cycling and only divide occasionally (Bickenbach, 1981). Assuming stem cell division during the labelling period, stem cell exposure to DNA precursors such as tritiated thymidine or bromodeoxyuridine followed by chase periods of up to 8 weeks labels the slow cycling cells (presumed to be stem cells). The more differentiated and more rapidly dividing daughter transit amplifying cells (TAC) undergo dilution of the label through multiple divisions. Through the use of tritiated thymidine, Cotsarelis *et al.*, found slow cycling label retaining cells (LRCs) in the limbal basal epithelial region of the mouse cornea and postulated that up to 10% of limbal basal cells were stem cells (Cotsarelis *et al.*, 1989). Phenotypically this population of cells appear to be more primitive in nature as they remain small and round (Romano *et al.*, 2003).

Limbal basal cells exhibit higher proliferative potential when compared to peripheral and central cornea both *in vitro* and *in vivo*. Large epithelial wounds in rabbits heal faster than smaller central defects. This implies that the proliferative capacity of the peripheral cornea is greater than that of the central (Lavker *et al.*, 1991). In the human, limbal explant cultures have greater proliferative potential when compared to central explants (Ebato *et al.*, 1987; Ebato *et al.*, 1988). Furthermore, LESC proliferation is resistant to inhibition by tumour-promoting phorbol esters (Kruse and Tseng, 1993; Lavker *et al.*, 1998). Based upon the methods of characterisation used to identify features of stem cells isolated and cultured from human epidermis (Barrandon and Green, 1987), similar clonogenicity studies on cells isolated from the limbus produced large holoclone colonies (stem cell derived) with extended cell generation number. The less clonogenic meroclones and paraclones were found elsewhere in the cornea (Pellegrini *et al.*, 1999).

Clinical evidence also points toward the limbus as a depository for a stem cell population. During homeostasis, the limbal epithelial cells are thought to act as a barrier preventing conjunctival epithelial cells from encroaching upon the cornea (Tseng, 1989). During LESC failure (to be discussed later), the conjunctiva can invade the cornea causing chronic inflammation, painful corneal opacity and neovascularisation. Ambati *et al.*, have recently shown experimentally that soluble vascular endothelial growth factor receptor 1 (sFlt1) is important for corneal avascularity (Ambati *et al.*, 2006). They have since found expression of sFlt1 in normal human corneal epithelium and a reduction of sFlt1 in vascularised patients (Ambati *et al.*, 2007). Further clinical evidence pointing to the location of LESC at the limbus was demonstrated by Kenyon and

Tseng, who transplanted two limbal explants taken from the contralateral healthy eye of patients on the damaged eye. This resulted in re-epithelisation of the cornea and regression of persistent epithelial defects and neovascularisation (Kenyon and Tseng, 1989).

The dogma that stem cells which give rise to corneal epithelial cells exclusively reside in the limbus was recently challenged. In the mouse it was demonstrated that central corneal epithelium could be serially transplanted and that it contains oligopotent stem cells that can maintain the corneal epithelium without cellular input from the limbal region. Furthermore, holoclone colonies were cultured from the central corneas of a number of mammalian species including from two human donors (Majo *et al.*, 2008). However, both human donors were 4 years or younger so it will be interesting to see if the results are reproducible in the adult human cornea when development of the eye is complete.

In the skin, the existence of transit amplifying cells has also been questioned. Rather than stem cells producing transit amplifying cells to maintain homeostasis in the epidermis, it has been proposed that a population of 'committed progenitor' cells fulfil this function during normal tissue turn over. It is proposed that the stem cells are only called into action in response to injury (Clayton *et al.*, 2007; Jones *et al.*, 2007). Similarly, it has been proposed that function of LSCs is to respond to injury and not to look after normal wear and tear of the corneal epithelium (Majo *et al.*, 2008). It remains to be determined if the long-accepted transit amplifying cell hypothesis continues to hold true for the corneal epithelium.

### **The LESC niche**

The stem cell niche, or microenvironment consisting of cellular and extracellular components, is hypothesised to prevent stem cell differentiation and thus regulates their fate (Schofield, 1983; Watt and Hogan, 2000). When a stem cell divides asymmetrically, one daughter may leave the niche to enter a differentiation pathway under the influence of different environmental stimuli. The limbus differs from cornea both anatomically and functionally and hence could differentially determine stem cell fate.

Within the limbal region of the cornea, the LESC niche is thought to be located within the palisades of Vogt (PV) – an undulating region of increased surface area. The palisades are highly pigmented with melanocytes (Davanger and Evenson, 1971; Higa *et al.*, 2005) and are infiltrated with Langerhan's cells (Baum, 1970) and T-lymphocytes (Vantrappen *et al.*, 1985). The melanin pigmentation is thought to shield LSCs from damaging ultraviolet light and the resultant generation of reactive oxygen species (Shimmura and Tsubota, 1997). The deep undulations of the Palisades of Vogt at the limbus provide LESC with an environment that protect them from shearing forces (Gipson, 1989). Furthermore the crypts described by Shortt *et al.*, predominantly occur on the superior and inferior cornea where they are normally covered by the eye lids. (Shortt *et al.*, 2007a) This may reflect the evolution of a protective environment for LSCs in humans. The basement membrane lining the LESC niche contains papillae of stroma that project upwards (Shortt *et al.*, 2007a). The limbal and corneal basement membrane components also differ, with the limbal region containing laminin-1,5 and  $\alpha 2\beta 2$  chains not found in the cornea. Furthermore, type IV collagen  $\alpha 1$ ,  $\alpha 2$  and  $\alpha 5$  chains are found in the limbal region whereas  $\alpha 3$  and  $\alpha 5$  are located in the cornea (Ljubimov *et al.*, 1995; Tuori *et al.*, 1996). A more recent study by Schlötzer-Schrehardt *et al.*, found patchy immunolocalisation of laminin  $\gamma 3$  chain, BM40/SPARC and tenascin C, that was also found to co-localise with ABCG2/p63/K19-positive cell clusters. These factors may be involved in retaining cell stemness (Schlotzer-Schrehardt *et al.*, 2007).



The basement membrane beneath the LESC may also act to sequester and therefore modulate growth factors and cytokines involved in LESC regulation and function (Klenkler and Sheardown, 2004). Although the surface of the cornea is exposed to atmospheric oxygen, the LESC niche lies beneath a number of cell layers where the oxygen tension is likely to be lower. Interestingly, hypoxic *in vitro* conditions have been found to produce larger, less differentiated limbal epithelial cell colonies suggesting that low oxygen levels may induce selective proliferation of undifferentiated cells (Miyashita *et al.*, 2007).

The limbal niche is vascularised and highly innervated (Lawrenson and Ruskell, 1991) unlike the avascular cornea and therefore is a potential source of nutrients and growth factors for LESC. Limbal fibroblasts in the underlying stroma are heterogeneous and express secreted protein acidic and rich in cysteine (SPARC) that may contribute to LESC adhesion (Shimmura *et al.*, 2006). Furthermore, Nakamura *et al.*, identified a population of bone marrow-derived cells located in the limbal stroma following transplantation of GFP labelled bone marrow cells into nude mice (Nakamura *et al.*, 2005). It is possible therefore that these cells are able to migrate into the limbal stroma, although any potential functionality remains unclear.

Sonic hedgehog, Wnt/ $\beta$ -catenin, TGF- $\beta$  and Notch signalling pathways have all being implicated in niche control of stem cells, however little is known of their potential roles in the LESC niche. Mice lacking in expression of Dkk2, a Wnt pathway inhibitor, display epidermal differentiation on the ocular surface. The lack of Dkk2, leads to increased Wnt/ $\beta$ -catenin signalling in the limbal stroma. This demonstrates the importance of limbal niche control over LESC differentiation during development. PAX6 expression is also lost in the corneal epithelial cells of these mice, suggesting it is downstream of Dkk2 (Mukhopadhyay *et al.*, 2006). Deficiencies in PAX6 leads to aniridia resulting in impaired corneal epithelial function and eventual LESC failure, which may be due to altered niche development.

### **Putative positive and negative LESC markers**

The literature reflects many attempts to prospectively identify LESC using a specific marker. As yet no single, reliable marker has been found. However, the expression of a combination of several features seems to allow for greater specificity.

Putative ‘markers’ can either be positive (present) or negative (absent). Limbal basal cells lack differentiation markers such as the 64 kDa cytokeratin 3 (CK3) that is present in all other layers of the corneal epithelium and the suprabasal layers of the limbal epithelium (Schermer *et al.*, 1986). The corneal specific 55 kD protein, cytokeratin 12 (CK12) is also expressed in a similar pattern (Chaloin-Dufau *et al.*, 1990). Furthermore, connexin 43 (Shortt *et al.*, 2007a; Matic *et al.*, 1997) and involucrin (Chen *et al.*, 2004), both markers of cells destined for differentiation, are also absent.

The transcription factor p63 is required for formation of epidermis and has been proposed as a putative positive LESC marker (Pellegrini *et al.*, 2001). *In vitro*, p63 was found to be expressed in limbal epithelial cell derived holoclones with little or no expression in meroclones and paraclones. *In vivo*, p63 was located in the limbal basal epithelium. However, since these initial observations a number of reports have suggested that p63 is not sufficiently specific to act as an LESC marker as it has also been localised to basal cells of the peripheral and central cornea in humans (Chen *et al.*, 2004; Dua *et al.*, 2003) and in rats (Chee *et al.*, 2006). However, limbal epithelial cells expressing high levels of p63 with a high nuclear to cytoplasmic ratio appear to be

more stem like (Arpitha *et al.*, 2005). Further work has since indicated that the  $\Delta$ Np63 $\alpha$  isoform may more specifically label LESC (Di Iorio *et al.*, 2005).

Many types of organ-specific stem cells, including LESC have been recently shown to exhibit a side population (SP) phenotype. The SP cells are able to efflux Hoechst 33342 dye through the ATP-binding cassette transporter Bcrp1/ABCG2. ABCG2 has therefore been proposed to be a universal marker for stem cells (Zhou *et al.*, 2001; Watanabe *et al.*, 2004). In putative LESCs, this protein has been immunolocalised to the cell membrane and cytoplasm of a population of limbal basal cells and a few suprabasal cells (Chen *et al.*, 2004). Furthermore, ABCG2 positive cells produce higher colony forming efficiency values *in vitro* than their negative counterparts (de Paiva *et al.*, 2005). Our laboratory has localised ABCG2 to the outer edge of holoclones where it is thought that the stem cells reside.

Clusters of cells expressing the integrin  $\alpha$ 9 have been localised to the limbal basal epithelium (Stepp *et al.*, 1995). However, upregulation of  $\alpha$ 9 in wounded murine corneas have since indicated this integrin to be associated with TAC's (Stepp and Zhu, 1997). Integrin  $\beta$ 1 was originally suggested to be a keratinocyte marker (Jones and Watt, 1993). Cells that rapidly adhere to the integrin  $\beta$ 1 ligand, collagen IV also display LESC properties (Li and Lu, 2005). Limbal basal epithelial cells are described as  $\beta$ 1 integrin bright as are the stem cells of the epidermis suggesting a gradient of expression that decreases with differentiation. The integrins  $\alpha$ 2,  $\alpha$ 6 and  $\beta$ 4 are negative in the limbal basal epithelial cells (Schlotzer-Schrehardt and Kruse, 2005).

N-cadherin is an important mediator of cell-cell adhesion and may play a key role in the maintenance of haemopoietic stem cells by facilitating adhesion to osteoblasts in the bone marrow niche (Calvi *et al.*, 2003; Zhang *et al.*, 2003). Hayashi *et al* found expression of N-cadherin in a subpopulation of limbal epithelial basal cells and in adjacent melanocytes implying N-cadherin plays an important role in interactions between LESC and their corresponding niche cells (Hayashi *et al.*, 2007).

Even though the limbal epithelium is derived from the surface ectoderm a number of neural stem cell markers have been suggested as LESC markers. Recent in depth immunological studies of neurotrophic factors and their receptors in the human has found NGF, glial cell-derived neurotrophic factor (GDNF) and their corresponding receptors TrkA and GDNF family receptor alpha (GFR $\alpha$ )-1 to be exclusively expressed in the limbus (Qi *et al.*, 2008).

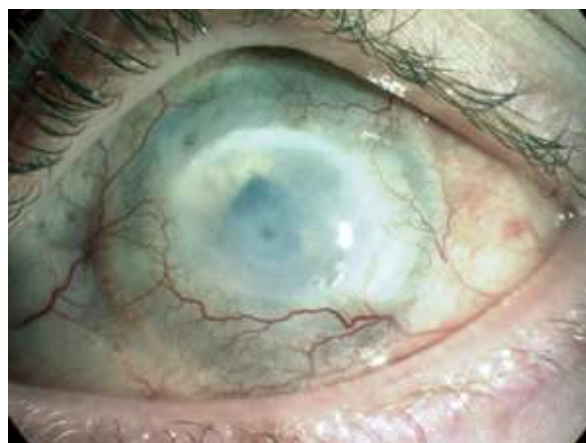
Notch 1 is a ligand-activated transmembrane receptor that has been shown to maintain progenitor cells in a number of tissues. The role of Notch signalling in the cornea is unclear. However, cell clusters in the palisades of Vogt have been found with some co-localisation with ABCG2 (Thomas *et al.*, 2007). Using Notch 1 deficient mice, Vauclair *et al*, demonstrated Notch 1 signalling is required for cell fate maintenance during corneal epithelial wound healing linking this to regulation of vitamin A metabolism (Vauclair *et al.*, 2007). Notch 1, other Notch family members and their down-stream targets have been identified throughout the cornea suggesting a role in differentiation (Ma *et al.*, 2007). More recently, Nakamura *et al.*, has found Hes1, a major target in Notch1 signalling, to be localised to the basal limbal epithelium in adult mice (Nakamura *et al.*, 2008). It is likely that Notch signalling, perhaps under synergistic regulation with the Wnt signalling pathway, controls the balance between LESC self-renewal and daughter cell commitment to differentiation. The cell cycle arrest transcription factor C/EBP $\Delta$  has also been implicated in the regulation of LESC self-renewal. Limbal epithelial basal cells that express C/EBP $\Delta$  co-express Bmi1 (which is involved in stem cell self renewal) and  $\Delta$ Np63 $\alpha$  (Barbaro *et al.*, 2007).

Cell-cell communication is facilitated by gap junctions. Connexins 43 and connexin 50 are present in the corneal epithelium (Dong *et al.*, 1994). Cx 43 is expressed by corneal basal cells except that of the limbus, implying it is utilised by more early TACs. The lack of intracellular communication has been suggested to help maintain stem cells and their niche (Matic *et al.*, 1997) by protecting the cells from damage affecting adjacent neighbours (Chee *et al.*, 2006). Like the stratified squamous epithelia, (Watt and Green, 1981) involucrin is also expressed in the corneal epithelium (Chen *et al.*, 2004) and in larger cells *in vitro* suggesting it is a marker of differentiation.

The RNA binding protein, Musashi-1 is produced in the developing and adult eye (Raji *et al.*, 2007) and has recently been found in putative LESC co-cultured with amniotic epithelial cells as feeders (Chen *et al.*, 2007).

### **Clinical consequences of LESC failure and cultured stem cell therapy**

LESC deficiency can occur as a result of primary or acquired insults. Partial or full LESC deficiency leads to deleterious effects on corneal wound healing and surface integrity (Chen and Tseng, 1991; Dua *et al.*, 2003). Deficiency can arise following injuries including chemical or thermal burns and through diseases such as aniridia and Stevens Johnson syndrome (see Figure 5). As a result of LESC deficiency conjunctivalisation, neovascularisation, chronic inflammation, recurrent erosions, ulceration and stromal scarring can occur causing painful vision loss (Holland and Schwartz, 1996; Kenyon and Tseng, 1989; Puangsricharern and Tseng, 1995). Long term restoration of visual function requires renewal of the corneal epithelium, through replacement of the stem cell population has traditionally been achieved by grafting limbal auto- or allografts (Kenyon and Tseng, 1989 {Ramaesh, 2003 #1138}). Each procedure carries a risk of complication such as damage to healthy eye by removal of autologous tissue for transplantation or side effects from long-term immunosuppression with allogenic tissue. As an alternative, cultured LESC therapy has been developed where LESC are expanded *in vitro* for therapeutic application in patients in a variety of protocols utilising amniotic membrane or fibrin, in the presence or absence of growth arrested 3T3 fibroblast feeder layers (Lindberg *et al.*, 1993; Pellegrini *et al.*, 1997; Grueterich *et al.*, 2002; Koizumi *et al.*, 2001; Shortt *et al.*, 2007b; Tsai *et al.*, 2000). Cultured autologous mucosal epithelial cell grafts have also been used to reconstruct the ocular surface of LESC deficient patients with some success (Nakamura *et al.*, 2003). Recently it has been demonstrated that other stem cell populations including human embryonic stem cells (Ahmad *et al.*, 2007) and hair follicle stem cells (Blazejewska *et al.*, 2008) can be driven towards a corneal epithelial-like phenotype. These exciting data may lead to alternative therapeutic strategies in the future for patients blinded by ocular surface disease caused by failure of LESC function.



**Figure 5: Chemical burn injury.**

An alkali burn to the human cornea can cause ocular surface failure with neovascularisation, opacification and blindness resulting from LESC deficiency.

The biological mechanisms of efficacy experienced by recipients of the cultured LESC are unclear yet the clinical results are promising. It has been suggested that bone marrow derived stem cells may be recruited to the cornea to repair the damage caused by LESC failure (Daya *et al.*, 2005) since no long-term survival of allogeneic cultured LESC has been demonstrated. Our hypothesis is that the transplanted cultured limbal epithelium may act, at least in some patients, by 'kick-starting' the recipient's own ailing LESC.

One of the causes of blindness in children with aniridia is due to progressive ocular surface failure. The majority of cases are caused by PAX6 haploinsufficiency being a result of heterozygous null mutations (Van Heyningen and Williamson, 2002). The disease is a pan-ocular, bilateral condition most prominently characterised by iris hypoplasia and varies from a relatively normal iris to the complete lack of an iris. Aniridia is often associated with cataracts, corneal vascularisation and glaucoma, with a significant number of cases of visual morbidity being due to corneal abnormalities. The underlying process of these abnormalities is poorly understood and is thought to be due to stem cell failure (Mackman *et al.*, 1979; Nishida *et al.*, 1995; Tseng and Li, 1996). However, it has also been proposed that it may be due to a deficiency in the stem cell niche and adjacent corneal stroma (Ramaesh *et al.*, 2005). More recently downregulation of Pax6 has been linked to abnormal epidermal differentiation of cornea epithelial cells (Li *et al.*, 2008). Treatment usually involves replacement of LESC using limbal allografts and/or corneal grafts or more recently *ex vivo* cultured LESC grafts (Holland *et al.*, 2003).

Aniridia represents a spectrum of disease, with iris anatomy defects ranging from the total absence of the iris to mild stromal hypoplasia with a pupil of normal appearance. Other associated defects include foveal hypoplasia, optic nerve hypoplasia, nystagmus, glaucoma and cataracts. These conditions may develop with age causing progressive visual loss. Another important factor leading to progressive loss of vision is aniridic-related keratopathy (ARK; Mackman *et al.*, 1979; Margo, 1983) which occurs in 90% of patients. Initially the cornea of patients appears normal during childhood (Nelson *et al.*, 1984; Nishida *et al.*, 1995). Changes occur in patients in their early teenage years, with the disease manifesting as a thickened irregular peripheral epithelium. This is followed by superficial neovascularisation and if left untreated it may result in subepithelial fibrosis and stromal scarring. Furthermore patients develop recurrent erosions, ulcerations, chronic

pain and eventual blindness (Holland *et al.*, 2003). Histologically, stromal neovascularisation and infiltration of inflammatory cells is seen with the destruction of Bowman's layer. Additionally, the presence of goblet and conjunctival cells is seen on the corneal surface (Margo, 1983). Traditionally, these clinical and histological manifestations have led to the consensus that LESC deficiency is largely responsible for corneal abnormalities in aniridia (Dua and Azuara-Blanco, 2000; Margo, 1983).

Based on the clinical and histological manifestation of aniridia, LESC deficiency has been presumed to be the pathogenesis behind ARK (Dua *et al.*, 2000; Margo, 1983; Nishida *et al.*, 1995). As a LESC marker has yet to be definitively identified, a true demonstration of LESC deficiency can not be assumed. Furthermore treatment for these patients involving replacement of LESC, either by keratolimbal allografts or more recently *ex vivo* expanded LESC grafts, provides a better outcome than corneal transplants (Holland *et al.*, 2003; Shortt *et al.*, 2007b; Tiller *et al.*, 2003). This is consistent with LESC deficiency. However, patients who receive both limbal and corneal tissue seem to have the better outcome, suggesting an abnormality with corneal tissue and not just the limbus. This may be a downstream effect of LESC deficiency. Alternatively low levels of PAX6 may have a generalised effect on the entire cornea. ARK could also be the consequence of abnormal corneal epithelial/stromal healing responses as there is insufficient evidence to indicate that the proliferative potential of LESC is impaired (Ramaesh *et al.*, 2005; Sivak *et al.*, 2000). Recently, studies looking at the regulation of genes downstream of *Pax6* in the *Pax6* heterozygous mouse, suggests the pathogenesis of ARK is due a number of mechanisms and not solely due to LESC deficiency (Ramaesh *et al.*, 2005). Further studies are needed to elucidate the exact mechanism of ARK progression to allow the use of appropriate treatments.

Mutations in *Pax6* result in a distinct small eye syndrome in the small eye (SEY) mouse and rat (Hill *et al.*, 1991; Matsuo *et al.*, 1993). These animals are excellent models for aniridia and the progressive nature of associated corneal abnormalities (Ramaesh *et al.*, 2003; Davis *et al.*, 2003). As the name suggests, mice with semidominant mutations develop small eyes and other ocular deformities. The murine strains *Pax6*<sup>Sey</sup>, *Pax6*<sup>SeyNeu</sup> and *Pax6*<sup>Coop</sup> represent three SEY mice with differing point mutations in the *Pax6* gene. *Pax6*<sup>SeyDey</sup> and *Pax6*<sup>SeyH</sup> mice have *Pax6* gene deletions (Hill *et al.*, 1991; Hogan *et al.*, 1986; Lyon *et al.*, 2000; Schmahl *et al.*, 1993; Theiler *et al.*, 1980). The SEY mice with semidominant heterozygous phenotypes demonstrate comparable developmental ocular abnormalities. This includes microphthalmia and defects in the iris, lens and retina with phenotypic severity being variable (Callearts *et al.*, 1997; Hill *et al.*, 1991). Cataracts, glaucoma and more importantly corneal abnormalities can develop in mutant SEY during post-natal development and adult life (Lyon *et al.*, 2000). Interestingly, the phenotypic variability seen between mice is also observed within a single SEY strain (Hogan *et al.*, 1986). This can even be detected between two eyes of the same mouse, suggesting a stringent requirement for *Pax6* activity to be at specific levels at precise times during development (Hill *et al.*, 1991; Schedl *et al.*, 1996; van Ramsdonk and Tilghman, 2000). Homozygotes generate an ultimately lethal phenotype with no eyes and nasal primordial (Hill *et al.*, 1991). A number of *sey* mice arose independently all of which are semidominant and by examining comparative mapping studies and phenotypic similarities to aniridia, it was suggested to be the mouse homologue of the human disease (Glaser T *et al.*, 1990). This research led to the discovery that the *Pax6* gene was responsible for the *Sey* phenotype and suggested that it was also responsible for the human disease, aniridia (Hill *et al.*, 1991). These models are helping us to address fundamental questions about LESC and their niche environment.

## Summary

LESCs are clearly important for vision. Efforts to specifically and prospectively identify these elusive cells are proving difficult. However, despite this mixed populations of epithelial cells isolated from the limbal region have the potential to restore the ocular surface and improve vision in patients with LESC function failure. The mode of clinical efficacy (and treatment failure) may become apparent once a more thorough understanding of normal LESC regulation and the role of the niche is gained.

## References

1. Ahmad S, Stewart R, Yung S, Kolli S, Armstrong L, Stojkovic M, Figueiredo F, Lako M. Differentiation of human embryonic stem cells into corneal epithelial like cells by *in vitro* replication of the corneal epithelial stem cell niche. *Stem Cells*. 2007;25:1145–1155.
2. Ambati B. K, Nozaki M, Singh N, Takeda A, Jani P.D, Suthar T, Albuquerque R.J, Richter E, Sakurai E, Newcomb M.T, *et al*. Corneal avascularity is due to soluble VEGF receptor-1. *Nature*. 2006;443:993–997.
3. Ambati B.K, Patterson E, Jani P, Jenkins C, Higgins E, Singh N, Suthar T, Vira N, Smith K, Caldwell R. Soluble vascular endothelial growth factor receptor-1 contributes to the corneal antiangiogenic barrier. *Br J Ophthalmol*. 2007;91:505–508.
4. Arpitha P, Prajna N.V, Srinivasan M, Muthukkaruppan V. High expression of p63 combined with a large N/C ratio defines a subset of human limbal epithelial cells: implications on epithelial stem cells. *Invest Ophthalmol Vis Sci*. 2005;46:3631–3636.
5. Barbaro V, Testa A, di Iorio E, Mavilio F, Pellegrini G, de Luca M. C/EBP delta regulates cell cycle and self-renewal of human limbal stem cells. *J Cell Biol*. 2007;177:1037–1049.
6. Barrandon Y, Green H. Three clonal types of keratinocyte with different capacities for multiplication. *Proc Natl Acad Sci USA*. 1987;84:2302–2306.
7. Baum J.L. Melanocyte and Langerhans cell population of the cornea and limbus in the albino animal. *Am J Ophthalmol*. 1970;69:669–676.
8. Beebe D.C, Masters B.R. Cell lineage and the differentiation of corneal epithelial cells. *Invest Ophthalmol Vis Sci*. 1996;37:1815–1825.
9. Bickenbach J.R. Identification and behaviour of label-retaining cells in oral mucosa and skin. *J Dent Res*. 1981;60:1611–1620.
10. Blazejewska E.A, Schlotzer-Schrehardt U, Zenkel M, Bachmann B, Chankiewicz E, Jacobi C, Kruse F.E. Corneal limbal microenvironment can induce transdifferentiation of hair follicle stem cells into corneal-like epithelial cells. *Stem Cells*. 2008.
11. Callearts P, Halder G, Gehring W.J. PAX-6 in development and evolution. *Annu, Rev Neurosci*. 1997;20:583–532.
12. Calvi L.M, Adams G.B, Weibrecht K.W, Weber J.M, Olson D.P, Knight M.C, Martin R.P, Schipani E, Divieti P, Bringham F.R, *et al*. Osteoblastic cells regulate the haematopoietic stem cell niche. *Nature*. 2003;425:841–846.
13. Chaloin-Dufau C, Sun T.T, Dhouailly D. Appearance of the keratin pair K3/K12 during embryonic and adult corneal epithelial differentiation in the chick and in the rabbit. *Cell Differ Dev*. 1990;32:97–108.
14. Chee K.Y, Kicic A, Wiffen S.J. Limbal stem cells: the search for a marker. *Clin Exp Ophthalmol*. 2006;34:64–73.
15. Chen J.J, Tseng S.C. Abnormal corneal epithelial wound healing in partial-thickness removal of limbal epithelium. *Invest Ophthalmol Vis Sci*. 1991;32:2219–2233.
16. Chen Y.T, Li W, Hayashida Y, He H, Chen S.Y, Tseng D.Y, Kheirkhah A, Tseng S.C. Human amniotic membrane epithelial cells as novel feeder layers for promoting ex vivo expansion of epithelial progenitor cells. *Stem Cells*. 2007;25:1995–2005.
17. Chen Z, de Paiva C.S, Luo L, Kretzer F.L, Pflugfelder S.C, Li D.Q. Characterisation of putative stem cell phenotype in human limbal epithelia. *Stem Cells*. 2004;22:355–366.

18. Chung E.H, Bukusoglu G, Zieske J.D. Localisation of corneal epithelial stem cells in the developing rat. *Invest Ophthalmol Vis Sci.* 1992;33:2199–2206.
19. Cintron C, Covington H, Kublin C.L. Morphogenesis of rabbit corneal stroma. *Invest Ophthalmol Vis Sci.* 1983;24:543–556.
20. Clayton E, Doupe D.P, Klein A.M, Winton D.J, Simons B.D, Jones P.H. A single type of progenitor cell maintains normal epidermis. *Nature.* 2007;446:185–189.
21. Cotsarelis G, Cheng G, Dong G, Sun T.T, Lavker R.M. Existence of slow-cycling limbal epithelial basal cells that can be preferentially stimulated to proliferate: implications on epithelial stem cells. *Cell.* 1989;57:201–209.
22. Coulombre A, Coulombre J. Lens development. The role of the lens in eye growth. *J Exp Zool.* 1964;156:39–48.
23. Davanger M, Evenson A. Role of the pericorneal structure in renewal of corneal epithelium. *Nature.* 1971;229:560–561.
24. Davis J, Duncan M.K, Robison W.G.J, Piatigorsky J. Requirement for *Pax6* in corneal morphogenesis: a role in adhesion. *J Cell Sci.* 2003;116:2157–2167.
25. Daya S.M, Watson A, Sharpe J.R, Giledi O, Rowe A, James S.E. Outcomes and DNA analysis of ex vivo expanded stem cell allograft for ocular surface reconstruction. *Ophthalmology.* 2005;112:470–477.
26. de Paiva C.S, Chen Z, Corrales R.M, Pflugfelder S.C, Li D.Q. *ABCG2* transporter identifies a population of clonogenic human limbal epithelial cells. *Stem Cells.* 2005;23:63–73.
27. Di Iorio E, Barbaro V, Ruzza A, Ponzin D, Pellegrini G, de Luca M. Isoforms of DeltaNp63 and the migration of ocular limbal cells in human corneal regeneration. *Proc Natl Acad Sci USA.* 2005;102:9523–9528.
28. Dong Y, Roos M, Gruijters T, Donaldson P, Bullivant S, Beyer E, Kistler J. Differential expression of two gap junctions proteins in corneal epithelium. *Eur J Cell Biol.* 1994;64:95–100.
29. Du Y, Funderburgh M, Mann M.N, SunderRaj N, Funderburgh J.L. Multipotent stem cells in human corneal stroma. *Stem Cells.* 2005;23:1266–1275.
30. Dua H.S, Azuara-Blanco A. Limbal stem cells of the corneal epithelium. *Surv Ophthalmol.* 2000;44:415–425.
31. Dua H.S, Joseph A, Shanmuganathan V.A, Jones R.E. Stem cell differentiation and the effects of deficiency. 2003;17:877–885.
32. Dua H.S, Saini J.S, Azuara-Blanco A, Gupta P. Limbal stem cell deficiency: concept, aetiology, clinical presentation, diagnosis and management. *Indian J Ophthalmol.* 2000;48.
33. Ebato B, Friend J, Thoft R.A. Comparison of central and peripheral human corneal epithelium in tissue culture. *Invest Ophthalmol Vis Sci.* 1987;28:1450–1456.
34. Ebato B, Friend J, Thoft R.A. Comparison of limbal and peripheral human corneal epithelium in tissue culture. *Invest Ophthalmol Vis Sci.* 1988;29:1533–1537.
35. Fini M.E, Stramer B.M. How the cornea heals: cornea-specific repair mechanism affecting surgical outcomes. *Cornea.* 2005;24:S2–S11.
36. Funderburgh M.L, Du Y, Mann M.N, SunderRaj N, Funderburgh J.L. *PAX6* expression identifies progenitor cells for corneal keratocytes. *FASEB J.* 2005;19:1371–1373.
37. Gipson I.K. The epithelial basement membrane zone of the limbus. *Eye.* 1989;3:132–140.
38. Grueterich M, Espana E.M, Touhami A, Ti S.E, Tseng S.C. Phenotypic study of a case with successful transplantation of ex vivo expanded human limbal epithelium for unilateral total limbal stem cell deficiency. *Ophthalmology.* 2002;109:1547–1552.
39. Hausteine J. On the ultrastructure of the developing and adult mouse corneal stroma. *Anat Embryol.* 1983;168:291–305.
40. Hay E.D, Linsenmayer T.F, Trelstad R.L, von der Mark K. Origin and distribution of collagens in the developing avian cornea. *Curr Top Eye Res.* 1979;1:1–35.
41. Hayashi R, Yamato M, Sugiyama H, Sumide T, Yang J, Okano T, Tano Y, Nishida K. N-cadherin is expressed by putative stem/progenitor cells and melanocytes in the human limbal epithelial stem cell niche. *Stem Cells.* 2007;25:289–296.
42. Higa K, Shimmura S, Miyashita H, Shimazaki J, Tsubota K. Melanocytes in the corneal limbus interact with K19-positive epithelial cells. *Exp Eye Res.* 2005;81:218–223.
43. Hill R.E, Favor J, Hogan B.L, Ton C.C, Saunders G.F, Hanson I.M, Prosser J, Jordan T, Hastie N.D, van Heyningen V. Mouse small eye results from mutations in a paired-like homeobox-containing gene. *Nature.* 1991;354:522–525.
44. Hogan B.L, Horsburgh G, Cohen J, Hetherington C.M, Fisher G, Lyon M.F. Small eyes (Sey): a homozygous lethal mutation on chromosome 2 which affects the differentiation of both lens and nasal placodes in the mouse. *J Embryol Exp Morphol.* 1986;97:95–110.



45. Holland E.J, Djalilian A.R, Schwartz G.S. Management of aniridic keratopathy with keratolimbal allograft: a limbal stem cell transplantation technique. *Ophthalmology*. 2003;110:125–130.
46. Holland E.J, Schwartz G.S. The evolution of epithelial transplantation for severe ocular surface disease and a proposed classification system. *Cornea*. 1996;15:549–556.
47. Huang A.J, Tseng S.C. Corneal epithelial wound healing in the absence of limbal epithelium. *Invest Ophthalmol Vis Sci*. 1991;32:96–105.
48. Jester J.V, Moller-Pedersen T, Huang J, Sax C.M, Kays W.T, Cavanagh H.D, Petroll W.M, Piatigorsky J. The cellular basis of corneal transparency: evidence for corneal crystallins. *J Cell Sci*. 1999;112:613–622.
49. Jones P.H, Simon B.D, Watt F.M. Sic transit gloria: farewell to the epidermal transit amplifying cell? *Cell Stem Cell*. 2007;1:371–381.
50. Jones P.H, Watt F.M. Separation of human epidermal stem cells from transit amplifying cells on the basis of differences in integrin function and expression. *Cell*. 1993;73:713–724.
51. Kaufman M.H. Postcranial morphological features of homozygous tetraploid mouse embryos. *J Anat*. 1992;180:521–534.
52. Kenyon K.R, Tseng S.C. Limbal autograft transplantation for ocular surface disorders. *Ophthalmology*. 1989;96:709–722.
53. Kinoshita S, Friend J, Thoft R.A. Sex chromatin of donor corneal epithelium in rabbits. *Invest Ophthalmol Vis Sci*. 1981;21:434–441.
54. Klenkler B, Sheardown H. Growth factors in the anterior segment: role in tissue maintenance, wound healing and ocular pathology. *Exp Eye Res*. 2004;79:677–688.
55. Klyce S.D. Electrical profiles in the corneal epithelium. *J Physiol*. 1972;226:407–429.
56. Koizumi N, Inatomi T, Suzuki K, Sotozono C, Kinoshita S. Cultivated corneal epithelial stem cell transplantation in ocular surface disorders. *Ophthalmology*. 2001;108:1569–1574.
57. Kruse F.E, Tseng S.C. A tumor promoter-resistant subpopulation of progenitor cells is larger in limbal epithelium than in corneal epithelium. *Invest Ophthalmol Vis Sci*. 1993;34:2501–2511.
58. Kurpakus M.A, Stock E.L, Jones J.C. Expression of the 55-kD/64-kD corneal keratins in ocular surface epithelium. *Invest Ophthalmol Vis Sci*. 1990;31:448–456.
59. Lavker R.M, Dong G, Cheng S.Z, Kudoh K, Cotsarelis G, Sun T.T. Relative proliferative rates of limbal and corneal epithelia. Implications of corneal epithelial migration, circadian rhythm, and suprabasally located DNA-synthesising keratinocytes. *Invest Ophthalmol Vis Sci*. 1991;32:1864–1875.
60. Lavker R.M, Sun T.T. Epithelial stem cells: the eye provides a vision. *Eye*. 2003;17:937–942.
61. Lavker R.M, Wei Z.G, Sun T.T. Phorbol ester preferentially stimulates mouse forniceal conjunctival and limbal epithelial cells to proliferate *in vivo*. *Invest Ophthalmol Vis Sci*. 1998;39:301–307.
62. Lawrenson J.G, Ruskell G.L. The structure of corpuscular nerve endings in the limbal conjunctiva of the human eye. *J Anat*. 1991;177:75–84.
63. Lehrer M.S, Sun T.T, Lavker R.M. Strategies of epithelial repair: modulation of stem cell and transit amplifying cell proliferation. *J Cell Sci*. 1998;111:2867–2875.
64. Li T, Lu L. Epidermal growth factor-induced proliferation requires down-regulation of Pax6 in corneal epithelial cells. *J Biol Chem*. 2005;280:12988–12995.
65. Li W, Chen Y.-T, Hayashida Y, Blanco G, Kheirkah A, He H, Chen S.-Y, Liu C.Y, Tseng S.C. Down-regulation of Pax6 is associated with abnormal differentiation of corneal epithelial surface diseases. *J Pathol*. 2008;214:114–122.
66. Lindberg K, Brown M.E, Chaves H.V, Kenyon K.R, Rheinwald J.G. *In vitro* propagation of human ocular surface epithelial cells for transplantation. *Invest Ophthalmol Vis Sci*. 1993;34:2672–2679.
67. Ljubimov A.V, Burgeson R.E, Butkowski R.J, Micheal A.F, Sun T.T, Kenney M.C. Human corneal basement membrane heterogeneity: topographical differences in the expression of type IV collagen and laminin isoforms. *Lab Invest*. 1995;72:461–473.
68. Lyon M.F, Bogani D, Boyd Y, Guillot P, Favor j. Further genetic analysis of two autosomal dominant mouse eye defects, Ccw and Pax6(coop) *Mol Vis*. 2000;6:199–203.
69. Ma A, Boulton M, Zhao B, Connon C, Cai J, Albon J. A role for notch signalling in human corneal epithelial cell differentiation and proliferation. *Invest Ophthalmol Vis Sci*. 2007;48:3576–3585.
70. Mackman G, Brightbill F.S, Optiz J.M. Corneal changes in aniridia. *Am J Ophthalmol*. 1979;87:497–502.
71. Majo F, Rochat A, Nicolas M, Jacoude G.A, Barrandon Y. Oligopotent stem cells are distributed throughout the entire mammalian ocular surface. *Nature*. 2008;456:250–254.
72. Mann I. A study of epithelial regeneration in the living eye. *Br J Ophthalmol*. 1944;28:26–40.

73. Margo C.E. Congenital aniridia: a histopathologic study of the anterior segment in children. *J Pediatr Ophthalmol Strabismus*. 1983;20:192–198.
74. Matic M, Petrov I.N, Chen S, Wang C, Dimitrijevic S.D, Wolosin J.M. Stem cells of the corneal epithelium lack connexins and metabolite transfer capacity. *Differentiation*. 1997;61:251–260.
75. Matsuo T, Osumi-Yamashita N, Noji S, Ohuchi H, Koyama E, Myokai F, Matsuo N, Taniguchi S, Doi H, Iseke S. A mutation in the *Pax-6* gene in rat small eye is associated with impaired migration of midbrain crest cells. *Nat Genet*. 1993;3:299–304.
76. Meek K.M, Dennis S, Khan S. Changes in the refractive index of the stroma and its extracellular matrix when the cornea swells. *Biophys J*. 2003;85:2205–2212.
77. Miyashita H, Higa K, Kato N, Kawakita T, Yoshida S, Tsubota K, Shimmura S. Hypoxia enhances the expansion of human limbal epithelial progenitor cells *in vitro*. *Invest Ophthalmol Vis Sci*. 2007;8.
78. Mukhopadhyay M, Gorivodsky M, Shtrom S, Grinberg A, Niehrs C, Morasso M.I, Westpal H. *Dkk2* plays an essential role in the corneal fate of the ocular surface epithelium. *Development*. 2006;133:2149–2154.
79. Muller L.J, Pels L, Vrensen G.F. Novel aspects of the ultrastructural organisation of human corneal keratocytes. *Invest Ophthalmol Vis Sci*. 1995;36:2557–2567.
80. Nakamura M, Endo K.-I, Cooper L.J, Fullwood N, Tanifuji N, Tsuzuki M, Koziyumi N, Inatomi T, Sano Y, Kinoshita S. The successful culture and autologous transplantation of rabbit oral mucosal epithelial cells on amniotic membrane. *Invest Ophthalmol Vis Sci*. 2003;44:106–116.
81. Nakamura M, Ishikawa F, Sonoda K.H, Hisatomi T, Qiao H, Yamada J, Fukata M, Ishibashi T, Harada M, Kinoshita S. Characterisation and distribution of bone marrow stem cells in the mouse cornea. *Invest Ophthalmol Vis Sci*. 2005;46:497–503.
82. Nakamura T, Ohtsuka T, Sekiyama E, Cooper L.J, Kokubu H, Fullwood N, Barrandon Y, Kageyama R, Kinoshita S. *Hes1* regulates corneal development and the function of corneal stem/progenitor cells. *Stem Cells*. 2008;26:1265–1274.
83. Nelson L.B, Spaeth G.L, Nowinski T.S, Margo C.E, Jackson L. Aniridia. A review. *Surv Ophthalmol*. 1984;28:621–642.
84. Nishida K, Kinoshita S, Ohashi Y, Kuwayama Y, Yamamoto S. Ocular surface abnormalities in aniridia. *Am J Ophthalmol*. 1995;120:368–375.
85. Pajooesh-Ganji A, Stepp M.A. In search of markers for the corneal epithelium. *Biol Cell*. 2005;97:265–276.
86. Pei Y.F, Rhodin J.A. The prenatal development of the mouse eye. *Anat Rec*. 1970;168:105–125.
87. Pellegrini G, Dellambra E, Golisano O, Martinelli E, Fantozzi I, Bondanza S, Ponzin D, McKeon F, De Luca M. p63 identifies keratinocyte stem cells. *Proc Natl Acad Sci USA*. 2001;98:3156–3161.
88. Pellegrini G, Golisano O, Paterna P, Lambiase A, Bonini S, Rama P, De Luca M. Location and clonal analysis of stem cells and their differentiated progeny in the human ocular surface. *J Cell Biol*. 1999;145:769–782.
89. Pellegrini G, Traverso C.E, Franzi A.T, Zingirian M, Cancedda R, De Luca M. Long-term restoration of damaged corneal surfaces with autologous cultivated human epithelium. *The Lancet*. 1997;349:990–993.
90. Puangsricharn V, Tseng S.C. Cytologic evidence of corneal diseases with limbal stem cell deficiency. *Ophthalmology*. 1995;102:1476–1485.
91. Qi H, Li D.Q, Shine H.D, Chen Z, Yoon K.C, Jones D.B, Pflugfelder S.C. Nerve growth factor and its receptor *TrkA* serve as potential markers for human corneal epithelial progenitor cells. *Exp Eye Res*. 2008;86:34–40.
92. Raji B, Dansault A, Leemput J, de la Houssaye G, Vieira V, Kobetz A, Arbogast L, Masson C, Menasche M, Abitbol M. The RNA-binding protein Musashi-1 is produced in the developing and adult mouse eye. *Mol Vis*. 2007;10:1412–1427.
93. Ramaesh K, Ramaesh T, Dutton G.N, Dhillon B. Evolving concepts on the pathogenic mechanisms of aniridia related keratopathy. *Int J Biochem Cell Biol*. 2005;37:547–557.
94. Ramaesh T, Collinson J.M, Ramaesh K, Kaufman M.H, West J.D, Dhillon B. Corneal abnormalities in *Pax6* +/- small eye mice mimic human aniridia-related keratopathy. *Invest Ophthalmol Vis Sci*. 2003;44:1871–1878.
95. Reneker L.W, Silversides D.W, Patel K, Overbeek P.A. TGF alpha can act as a chemoattractant to periostic mesenchymal cells in developing mouse eyes. *Development*. 1995;121:1669–1680.
96. Reneker L.W, Silversides D.W, Xu L, Overbeek P.A. Formation of corneal endothelium is essential for anterior segment development – a transgenic mouse model of anterior segment. *Development*. 2000;127:533–542.
97. Robinson M.L, Ohtaka-Maruyama C, Chan C.C, Jamieson S, Dickson C, Overbeek P.A, Chepelinsky A.B. Disregulation of ocular morphogenesis by lens-specific expression of FGF-3/int-2 in transgenic mice. *Dev Biol*. 1998;198:13–31.
98. Rolando M, Zierhut M. The ocular surface and tear film and their dysfunction in dry eye disease. *Surv Ophthalmol*. 2001;45:S203–S210.

99. Romano A.C, Espana E.M, Yoo S.H, Budak M.T, Wolosin J.M, Tseng S.C. Different cell sized in human limbal and central corneal basal epithelia measured by confocal microscopy and flow cytometry. *Invest Ophthalmol Vis Sci.* 2003;44:5125–5129.
100. Schedl A, Ross A, Lee M, Engelkamp D, Rashbass P, Van Heyningen V, Hastie N.D. Influence of PAX6 gene dosage on development: overexpression causes severe eye abnormalities. *Cell.* 1996;86:71–82.
101. Schermer A, Galvin S, Sun T.T. Differentiation-related expression of a major 64K corneal keratin *in vivo* and in culture suggests limbal location of corneal epithelial stem cells. *J Cell Biol.* 1986;103:49–62.
102. Schlotzer-Schrehardt U, Dietrich T, Saito K, Sorokin L, Sasaki T, Paulsson M, Kruse F.E. Characterisation of extracellular matrix components in the limbal epithelial stem cell compartment. *Exp Eye Res.* 2007;85:845–860.
103. Schlotzer-Schrehardt U, Kruse F.E. Identification and characterisation of limbal stem cells. *Exp Eye Res.* 2005;81:247–264.
104. Schmahl W, Knoedlseder M, Favor J, Davidson D. Defects of neuronal migration and the pathogenesis of cortical malformations are associated with Small eye (Sey) in the mouse, a point mutation at the Pax-6 locus. *Acta Neuropathol.* 1993;86:126–135.
105. Schofield R. The stem cell system. *Biomed Pharmacother.* 1983;37:375–380.
106. Sharma A, Coles W.H. Kinetics of corneal epithelial maintenance and graft loss. A population balance model. *Invest Ophthalmol Vis Sci.* 1989;30:1962–1971.
107. Shimmura S, Miyashita H, Higa K, Yoshida S, Shimazaki J, Tsubota K. Proteomic analysis of soluble factors secreted by limbal fibroblasts. *Mol Vis.* 2006;11:478–484.
108. Shimmura S, Tsubota K. Ultraviolet B-induced mitochondrial dysfunction is associated with decreased cell detachment of corneal epithelial cells *in vitro*. *Invest Ophthalmol Vis Sci.* 1997;38:620–626.
109. Shortt A.J, Secker G.A, Munro P.M, Khaw P.T, Tuft S.J, Daniels J.T. Characterisation of the limbal epithelial stem cell niche: novel imaging techniques permit in-vivo observation and targeted biopsy of limbal epithelial stem cells. *Stem Cells.* 2007a;5:1402–1409.
110. Shortt A.J, Secker G.A, Notara M.D, Limb G.A, Khaw P.T, Tuft S.J, Daniels J.T. Transplantation of *ex-vivo* cultured limbal epithelial stem cells – a review of current techniques and clinical results. *Surv Ophthalmol.* 2007b;52:483–502.
111. Sivak J.M, Mohan R, Rinehart W.B, Xu P.X, Maas R.L, Fini M.E. Pax-6 expression and activity are induced in the reepithelialising cornea and control activity of the transcriptional promotor for matrix metalloproteinase gelatinase B. *Dev Biol.* 2000;222:41–54.
112. Song J, Lee Y.G, Houston J, Petroll W.M, Chakravarti S, Cavanagh H.D, Jester J.V. Neonatal corneal stromal development in the normal and lumican deficient mouse. *Invest Ophthalmol Vis Sci.* 2003;44:548–457.
113. Stepp M.A, Zhu L. Upregulation of alpha 9 integrin and tenascin during epithelial regeneration after debridement in the cornea. *J Histochem Cytochem.* 1997;45:189–201.
114. Stepp M.A, Zhu L, Sheppard D, Cranfill R.L. Localised distribution of alpha 9 integrin in the cornea and changes in expression during corneal epithelial cell differentiation. *J Histochem Cytochem.* 1995;43:353–362.
115. Sun L, Ryan D.G, Zhou M, Sun T.T, Lavker R.M. EEDA: a protein associated with an early stage of stratified epithelial differentiation. *J Cell Physiol.* 2006;206:103–111.
116. Theiler K, Varnum D.S, Stevens L.C. Development of Dickie's small eye: an early lethal mutation in the house mouse. *Anat Embryol.* 1980;161:115–120.
117. Thoft R.A, Friend J. The X, Y, Z hypothesis of corneal epithelial maintenance. *Invest Ophthalmol Vis Sci.* 1983;24:1442–1443.
118. Thomas P.B, Liu Y.H, Zhuang F.F, Selvam S, Song S.W, Smith R.E, Trousdale M.D, Yiu S.C. Identification of Notch-1 expression in the limbal basal epithelium. *Mol Vis.* 2007;13:337–344.
119. Tiller A.M, Odenthal M.T, Verbraak F.D, Gortzak-Moorstein N. The influence of keratoplasty on visual prognosis in aniridia: a historical review of one large family. *Cornea.* 2003;22:105–110.
120. Trainor P.A, Tam P.P. Cranial papaxial mesoderm and neural crest cells of the mouse embryo: co-distribution in the craniofacial mesenchyme but distinct segregation in brachial arches. *Development.* 1995;121:2569–2582.
121. Tsai R.J.-F, Li L.-M, Chen J.-K. Reconstruction of damaged corneas by transplantation of autologous limbal epithelial cells. *New Engl J Med.* 2000;343:86–93.
122. Tseng S.C. Concept and application of limbal stem cells. *Eye.* 1989;3:141–157.
123. Tseng S.C, Li D.Q. Comparison of protein kinase C subtype expression between normal and aniridic human ocular surfaces: implications for limbal cell dysfunction in aniridia. *Cornea.* 1996;15:168–178.
124. Tuori A, Uusitalo H. and al., e. The immunohistochemical composition of the human corneal basement membrane. *Cornea.* 1996;15:286–294.
125. Van Heyningen V, Williamson K.A. PAX6 in sensory development. *Hum Mol Genet.* 2002;11:1161–1167.

126. van Ramsdonk C.D, Tilghman S.M. Dosage requirement and allelic expression of PAX6 during lens placode formation. *Development*. 2000;127:5439–5448.
127. Vantrappen L, Geboes K, Missotten L, Maudgal P.C, Desmet V. Lymphocytes and Langerhans cells in the normal cornea. *Invest Ophthalmol Vis Sci*. 1985;26:220–225.
128. Vauclair S, Majo F, Durham A.D, Ghyselinck N.B, Barrandon Y, Radke F. Corneal epithelial cell fate is maintained during repair by Notch-1 signalling via the regulation of vitamin A metabolism. *Dev Cell*. 2007;13:242–253.
129. Watanabe H, Tisdale A.S, Gipson I.K. Eyelid opening induces expression of a glycocalyx glycoprotein of rat ocular surface epithelium. *Invest Ophthalmol Vis Sci*. 1993;34:327–338.
130. Watanabe K, Nishida K, Yamato M, Umemoto T, Sumide T, Yamamoto K, Maeda N, Watanabe H, Okano T, Tano Y. Human limbal epithelium contains side population cells expressing the ATP-binding cassette transporter ABCG2. *FEBS Lett*. 2004;565:6–10.
131. Watt F.M, Green H. Involucrin synthesis is correlated with cell size in human epidermal cultures. *J Cell Biol*. 1981;90:738–742.
132. Watt F.M, Hogan B.L. Out of eden: stem cells and their niches. *Science*. 2000;287:1427–1430.
133. Welge-Lussen U, May C.A, Neubauer A.S, Priglinger S. Role of tissue growth factors in aqueous humor homeostasis. *Curr Opin Ophthalmol*. 2001;12:94–99.
134. West-Mays J.A, Dwivedi D.J. The keratocyte: corneal stromal cell with variable repair phenotypes. *Int J Biochem Cell Biol*. 2006;38:1625–1631.
135. Zhang J, Niu C, Ye L, Huang H, He X, Tong W.G, Ross J, Haug J, Johnson T, Feng J.Q, *et al*. Identification of the haematopoietic stem cell niche and control of the niche size. *Nature*. 2003;425:836–841.
136. Zhou S, Schuetz J.D, Bunting K.D, Colapietro A.M, Sampath J, Morris J.J, Lagutina I, Grosveld G.C, Osawa M, Nakauchi H, Sorrentino B.P. The ABC transporter Bcrp1/ ABCG2 is expressed in a wide variety of stem cells and is a molecular determinant of a side-population phenotype. *Nat Med*. 2001;7:1028–1034.
137. Zieske J.D, Guimaraes S.R, Hutcheon A.E. Kinetics of keratocyte proliferation in response to epithelial debridement. *Exp Eye Res*. 2001;72:33–39.

Edited by Fiona Watt and Fred Gage. Last revised May 28, 2009. Published June 30, 2009. This chapter should be cited as: Secker, G.A., and Daniels, J.T., Limbal epithelial stem cells of the cornea (June 30, 2009), StemBook, ed. The Stem Cell Research Community, StemBook, doi/10.3824/stembook.1.48.1, <http://www.stembook.org>.

Copyright: © 2009 Genevieve A. Secker and Julie T. Daniels.

This is an open-access article distributed under the terms of the Creative Commons Attribution License, which permits unrestricted use, distribution, and reproduction in any medium, provided the original work is properly cited.

Bookshelf ID: NBK27054 PMID: 20614614 DOI: [10.3824/stembook.1.48.1](https://doi.org/10.3824/stembook.1.48.1)

NCBI Bookshelf. A service of the National Library of Medicine, National Institutes of Health.

StemBook [Internet]. Cambridge (MA): Harvard Stem Cell Institute; 2008-. doi: 10.3824/stembook.1.48.1